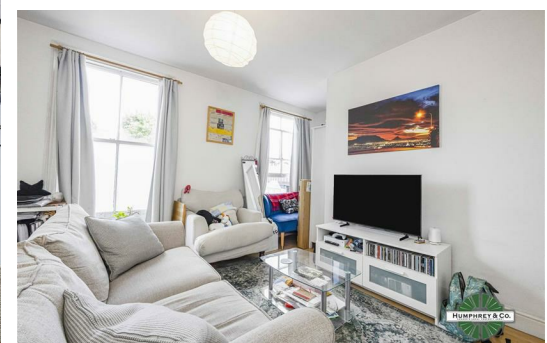
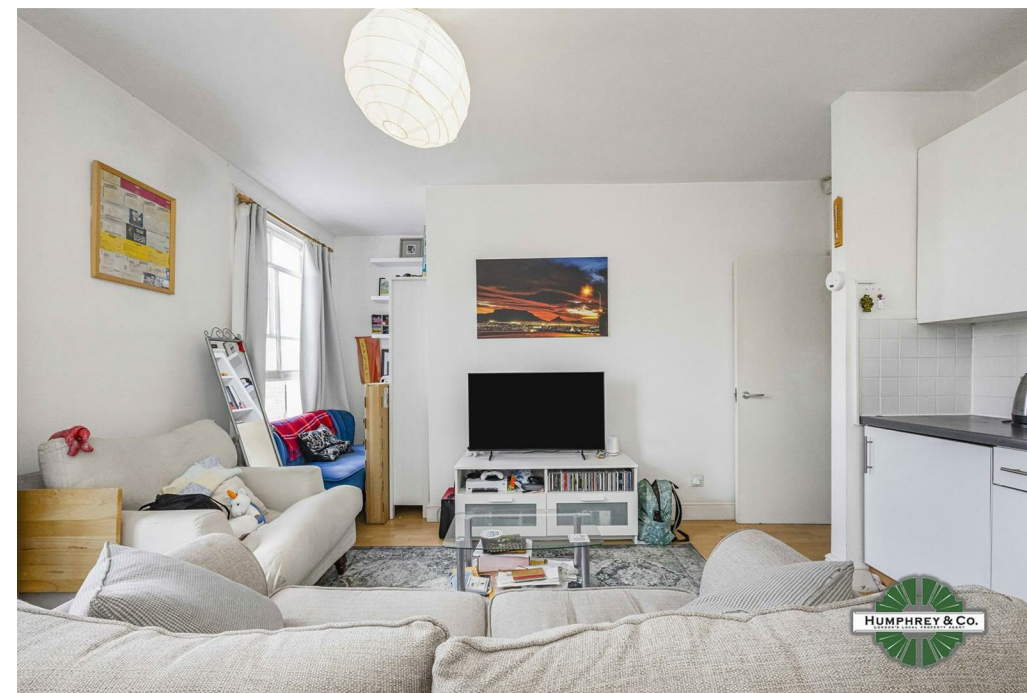


## Exmouth Street

Approximate Gross Internal Area  
Total = 43.4 sq m / 468 sq ft

This plan is for layout guidance only. Not drawn to scale unless stated. Windows and door openings are approximate. Whilst every care is taken in the preparation of this plan, please check all dimensions, shapes and compass bearings before making any decisions reliant upon them.

powered by:  
**THE360IMAGE**  
www.the360image.co.uk



## Directions

## Contact

125 Hoe Street  
London  
E17 4RX

E: [lettings@hcolondon.com](mailto:lettings@hcolondon.com)

T: 02085 210 755

[hcolondon.com](http://hcolondon.com)



1 Bed  
Flat  
located in





9C Exmouth Street

London  
E1 6PU

£1,750



GREAT LOCATION --- AVAILABLE FROM THE 7TH FEBRUARY ---ONE BEDROOM --- GOOD CONDITION --- NEUTRAL DECOR, BRIGHT AND AIRY --- GAS CENTRAL HEATING --- PART FURNISHED

London's Local Property Agent, Humphrey & Co Estates introduce to the rental market this spacious one bedroom flat. The flat comprises of a large lounge, one large bedroom, fully fitted kitchen and a fully tiled bathroom finished to a good spec. Gas central heating. Part furnished.  
Ideal for working professionals. Please call our friendly lettings team to secure a viewing.

